



# Design & Build

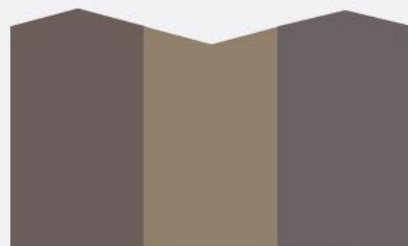
## Company Profile

- Project Management ✓
- Urban Planning & Design ✓
- Landscape ✓
- Architecture ✓
- Structural & MEP Designs ✓
- Interior Design ✓
- Construction ✓

## The Collaboration of **AEM Consultancy & IMKAN Construction**

The collaboration benefits from the cumulative experience of both companies, combining their strengths and capabilities to deliver exceptional results. Registered in UAE, Iraq, and Jordan, the collaboration has a wide geographical reach and is equipped to provide services worldwide, catering to diverse client needs and project requirements.

[www.aemconsultancy.com](http://www.aemconsultancy.com)  
[www.imkan.jo](http://www.imkan.jo)



# ABOUT US

The Collaboration

AEM Consultancy and IMKAN Construction have formed a collaborative partnership to offer comprehensive design, consultancy, and construction services. AEM Consultancy specializes in providing design and consultancy services, bringing their expertise and industry knowledge to deliver innovative and tailored solutions. On the other hand, IMKAN Construction brings its extensive experience in the construction field, ensuring the successful execution of projects to the highest standards. The collaboration benefits from the cumulative experience of both companies, combining their strengths and capabilities to deliver exceptional results. Registered in UAE, Iraq, and Jordan, the collaboration has a wide geographical reach and is equipped to provide services worldwide, catering to diverse client needs and project requirements.

+78

RECURRING  
CLIENTS

+87

PROJECTS  
COMPLETED

+12

YEARS IN  
CONSTRUCTION

**About us** • Our services • Core team • Our consultants • Previous projects • Our Clients • Contact us •

[www.aemconsultancy.com](http://www.aemconsultancy.com)  
[www.imkan.jo](http://www.imkan.jo)



# ABOUT US

## AEM CONSULTANCY

---

AEM Consultancy is an international consulting firm that provides high-quality advisory, engineering, and management services to a wide range of clients. With operational offices in Jordan, we have the capability to serve clients across different segments, including local and regional governments, international corporations, NGOs, and Inter-Governmental Agencies.

Our team of multinational and multicultural experts brings a wealth of experience to every project, leveraging their diverse backgrounds and expertise to deliver innovative and effective solutions.

At AEM Consultancy, we are dedicated to helping our clients achieve their goals and strive to exceed their expectations at every opportunity.

## IMKAN CONSTRUCTION

---

IMKAN Construction is a contracting company that was established in 2011. It is licensed to implement construction projects primarily in the Jordanian market under the name of IMKAN for Multi Construction Enterprises L.L.C. The company integrated to the management system (Quality, Occupational Health, and Safety) and its processes in efforts to enhance performance; it was awarded an (ISO 9001:2015 - ISO 45001:2015) in Engineering, Procurement, Construction of Civil, Electromechanical and interior fit-out projects.

IMKAN is committed to ensuring customer satisfaction; a deep understanding of client various needs helps us turn ideas and designs on papers into buildings. It boasts an outstanding track record and has a wealth of experience in delivering landmark projects.

The company also adheres to applicable statutory requirements, rules and regulations and adopts best practices for the prevention of work injuries. It is also committed to pursuing excellence through operating in safe and environment-friendly settings.

# OUR SERVICES

---



Project Management



Urban Planning & Design



Landscape



Architecture



Structural & MEP Designs



Interior Design



Construction



About us • **Our services** • Core team • Our consultants • Previous projects • Our Clients • Contact us •

[www.aemconsultancy.com](http://www.aemconsultancy.com)  
[www.imkan.jo](http://www.imkan.jo)





# CORE TEAM



## Collaboration's Core Team Members

- |   |  |                                     |
|---|--|-------------------------------------|
| <b>Marwa Haddad</b><br>Architect          | <b>Sarah Zghoul</b><br>Urban Planner         | <b>Batoul Khader</b><br>Architect   |
| <b>Samia Al-Kouz</b><br>Interior Designer | <b>Hala Abu Fares</b><br>Landscape Architect | <b>Mutaz Abtah</b><br>Urban Planner |

# OUR PROJECTS

Project Management

PREVIOUS PROJECTS OF THE COLLABORATION AND ITS MEMBERS

1

**The execution of conservation and restoration works of group of buildings at the Citadel of Erbil, Iraq**

Client: HCECR & UNESCO

The project scope of works includes retrieving the courtyard shapes, rehabilitation of the facades, wooden columns and beams, restoration of concrete blocks and walls, and removal where needed. It also involves vertical and horizontal strengthening of the brickwork, rebuilding of walls or parapets, rebuilding of staircases, and other special elements required. The goal of this project is to regain the space itself, which in these house's typology could be defined as a body that has been hollowed out by courtyards that evolved into the zoning spaces.

2

**RSB Residence**

Client: Private

Construction of a private villa resort over a cliff, combining a total built-up area of 900 m2. The project scope includes full turnkey works, including but not limited to earthworks, skeleton works, finishing, and MEP. This is one of the rare energy passive residences in the region.

About us • Our services • Core team • Our consultants • **Previous projects** • Our Clients • Contact us •

[www.aemconsultancy.com](http://www.aemconsultancy.com)  
[www.imkanjo](http://www.imkanjo)



# OUR PROJECTS

Urban Planning & Design

PREVIOUS PROJECTS OF THE COLLABORATION AND ITS MEMBERS

## 1 GIS Smart urban growth model - Spatial Planning

Client: Jerash Municipality in cooperation with GJU and GIZ

The project involves evaluating the best areas for future growth in Jerash city using sustainable growth principles and conducting Potential Surface Analysis (PSA).

## 2 Home based trip generation model - Transportation Planning

Client: UNDP

The project involves Calculating travel demand for residential area using GIS.

## 3 Iceland Gems, Reykjavik

Urban Landscape Project

The project, Iceland Gems, aims to connect surrounding natural areas around Ártúnshöfði again through six major guidelines: Promote coexistence, Plan a storm water attenuation, Build with topography, Response to the municipality future plans, Enhance urban and roof agriculture, and Generate recreational and social hubs.

The project will be developed in 4 phases;

- Phase 01- BRT line and attractions.
- Phase 02- Mixed used neighbourhoods i.
- Phase 03- Mixed used neighbourhoods ii.
- Phase 04- Dream Phase (Food forest).

About us • Our services • Core team • Our consultants • **Previous projects** • Our Clients • Contact us •

[www.aemconsultancy.com](http://www.aemconsultancy.com)  
[www.imkanjo](http://www.imkanjo)



# OUR PROJECTS

Urban Planning & Design

PREVIOUS PROJECTS OF THE COLLABORATION AND ITS MEMBERS

4

## Citadellsfogen, Climatic conscious neighborhood in Malmö

Climate smart Urban Design

The project's aim was to design a residential project in Malmö, Sweden, taking into consideration the climate of the area. Using different tools like SimScale, Rhino, and Grasshopper, we come up with a design that responds to people's way of living and microclimate considerations. For this project, we aimed to prevent high-speed wind and expose as many surfaces to the sun's natural light, we used deciduous trees as the main soft scape element in outdoor areas.

5

## Quezon City Plaza, Metro Manila, Philippines

Climate smart Urban Design

The project's aim was to design a residential project in metro Manila in the Philippines, taking into consideration the climate of the area. Using different tools like SimScale, Rhino, and Grasshopper, we come up with a design that responds to people's way of living and microclimate considerations. For this project, our aim was to generate wind through form making and positioning of the buildings. We also aimed for protection from the sun and heavy rains by building shelters.

About us • Our services • Core team • Our consultants • **Previous projects** • Our Clients • Contact us •

[www.aemconsultancy.com](http://www.aemconsultancy.com)  
[www.imkanjo](http://www.imkanjo)





# OUR PROJECTS

Urban Planning & Design

PREVIOUS PROJECTS OF THE COLLABORATION AND ITS MEMBERS

## 6 Airport city based on transit oriented development TOD

Queen Alia international airport near Hejaz railway station

This project aims to address the need for redirecting economic and business growth outside the central Amman area by identifying a new center for future investments. The goal is to create opportunities for economic development in a different location and stimulate growth in new areas.

## 7 Urban corridor planning and design

Arar street proposal for urban design and urban planning

The project's objective is to revitalize and reconfigure Arar Street as an urban corridor, enhancing its functionality and aesthetics. The goal is to create a vibrant and attractive space that promotes connectivity, pedestrian accessibility, and overall urban renewal. Through strategic planning and design interventions, the project aims to transform Arar Street into a thriving urban hub that meets the needs of residents, businesses, and visitors alike.

About us • Our services • Core team • Our consultants • **Previous projects** • Our Clients • Contact us •

[www.aemconsultancy.com](http://www.aemconsultancy.com)  
[www.imkanjo](http://www.imkanjo)



# OUR PROJECTS

Urban Planning & Design

PREVIOUS PROJECTS OF THE COLLABORATION AND ITS MEMBERS

8

## Gåsebäck Reborn Gåsebäck, Helsingborg

Urban Recycling Project

Gåsebäck is an old industrial neighborhood known for its famous fire station (brandstation) and railway repair station (Lokstallarna). However, in the late 80s, the area started to deteriorate and gain a negative reputation. The aim of the project is to revitalize the area and bring it back to life. As the title suggests, it is about the rebirth of Gåsebäck.

The project aims to gradually reactivate the area and transform it into a productive space that promotes coexistence, innovation, entrepreneurship, and the reintroduction of nature. This will be achieved by identifying and enhancing the existing qualities of the area and adding new elements to make it a vibrant and livable place once again.

About us • Our services • Core team • Our consultants • **Previous projects** • Our Clients • Contact us •

[www.aemconsultancy.com](http://www.aemconsultancy.com)  
[www.imkanjo](http://www.imkanjo)



# OUR PROJECTS

Urban Planning & Design

PREVIOUS PROJECTS OF THE COLLABORATION AND ITS MEMBERS

9

## Sweileh Terminal Planning & Design BRT Project

Client: Tamayouz International Award

The concept design focuses on creating a civic iconic Terminal at Sweileh, a crucial node on the BRT lines. The design aims to define the character of the area and enhance the overall experience for patrons. It includes arrangements for the efficient movement of people and connectivity to various modes of transportation, such as streetcars, buses, taxis, automobiles, and pedestrian pathways. The Terminal's design integrates the necessary facilities and amenities that cater to the needs of the area, providing a visually striking and functional space for patrons to encounter and engage with the transit system. The concept design emphasizes the image, service, and convenience of the Terminal, creating a memorable and seamless transit experience.

10

## Design Competition for a Land Exhibition and Business Center Building (Amman Chamber of Industry)

Client: Jordan Engineering Association

In the context of contributing to the development of the industrial sector and urging various local and international sectors to participate in displaying their products, marketing them and exchanging experiences, the Amman Chamber of Industry, in cooperation with the Jordanian Engineers Association represented by the Architectural Division Council, decided to launch a competition to present an architectural design idea for an exhibition grounds and a business center on a plot of land on a street Al-Matar near Al-Zaytoonah University.

About us • Our services • Core team • Our consultants • **Previous projects** • Our Clients • Contact us •

[www.aemconsultancy.com](http://www.aemconsultancy.com)  
[www.imkanjo](http://www.imkanjo)



# OUR PROJECTS

Landscape

PREVIOUS PROJECTS OF THE COLLABORATION AND ITS MEMBERS

## 1 THE FABRIC OF LIFE BOTANICAL GARDEN

Client: the digital exhibition at the AU Middle East

Focuses on spreading awareness about the importance of plants in Jordan on an environmental level, the society was involved in this case as well to show support and to protect the origins of plants that are endangered.

This project is considered one of a kind in Jordan, which makes it a pioneer and ahead of its time. This also contributes to expanding plant-related applications and complements the efforts of the National Center for Agricultural Research and Extension.

## 2 Rashed Al Zyoud Martyer, Meomorial Park

Client: Competition

The park has three entrances leading to a statue resembling the martyr placed in an open green space, which serves as the focal point visible from both inside and outside. Surrounding the park, there will be multiple layers of vegetation and landscape to provide safety and shield people from potential street accidents. Considering Zarpa City's hot climate and water scarcity, a selection of plants that can adapt and require minimal irrigation has been chosen. Additionally, a visually appealing and shallow water feature will be included for children's enjoyment. In the center of the park, there will be a green hill to create variation in the flat green space, and across from it, a small amphitheater where people can sit and possibly host futuristic performances. The park will serve as a recreational space for families, a gathering point for community activities, and a place where the community can honor the sacrifice of the country's guardians.



About us • Our services • Core team • Our consultants • **Previous projects** • Our Clients • Contact us •

[www.aemconsultancy.com](http://www.aemconsultancy.com)  
[www.imkanjo](http://www.imkanjo)



# OUR PROJECTS

Landscape

PREVIOUS PROJECTS OF THE COLLABORATION AND ITS MEMBERS

3

**A social, educational and recreational center for marine life in the Gulf of Aqaba, Jordan**

Client: Competition

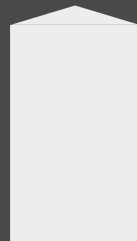
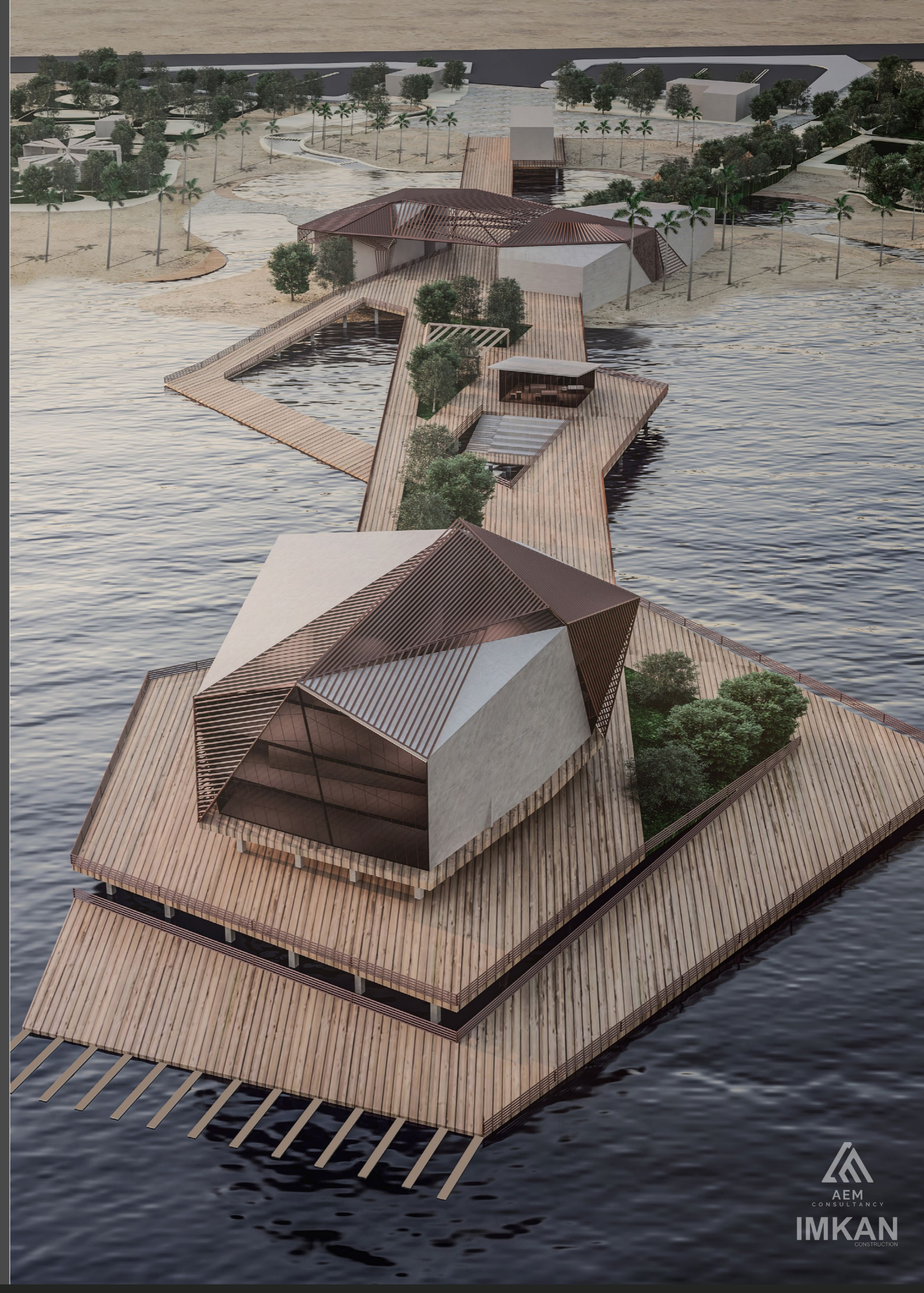
The project is a comprehensive social, educational, and recreational center dedicated to marine life in the Gulf of Aqaba, Jordan. It aims to provide a platform for learning, conservation, and enjoyment of the diverse marine ecosystem.

4

**Design Residence Backyards, Multiple Locations**

Client: Private

The projects involve the design of residential backyards across multiple locations. Our team will create customized outdoor spaces that enhance the beauty and functionality of each residence, providing a harmonious blend of aesthetics and practicality.



About us • Our services • Core team • Our consultants • **Previous projects** • Our Clients • Contact us •

[www.aemconsultancy.com](http://www.aemconsultancy.com)  
[www.imkanjo](http://www.imkanjo)



# OUR PROJECTS

Architecture

PREVIOUS PROJECTS OF THE COLLABORATION AND ITS MEMBERS

## 1 Berlin Affordable Housing Competition, Germany

Client: Bee Breeders

The project concept aims to address the housing shortage in Berlin by utilizing the rooftops of existing residential buildings. This innovative approach provides an immediate, sustainable, and cost-effective solution. By maximizing the use of available space, the project aims to create additional housing opportunities while minimizing the environmental impact. It offers a practical and efficient way to meet the growing demand for housing in the city.

## 2 Private Residence, Dubai

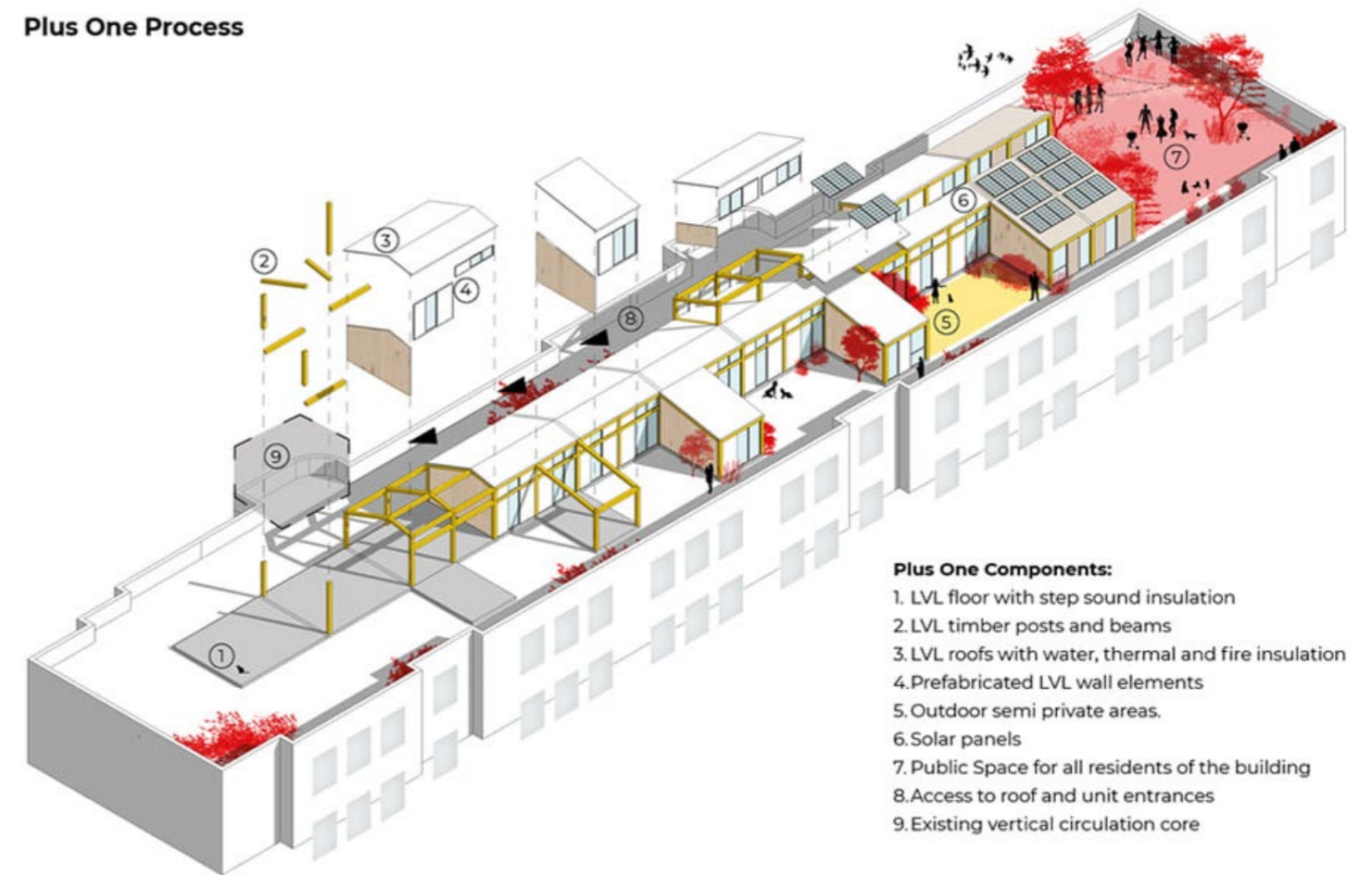
Client: Private

The villa in Dubai is a two-story classic-style design with a focus on elegant and timeless aesthetics. The landscaping complements the architecture, creating a serene and inviting outdoor environment. Attention to detail and quality craftsmanship are prioritized throughout the design process to ensure a luxurious and enduring living experience.

About us • Our services • Core team • Our consultants • **Previous projects** • Our Clients • Contact us •

[www.aemconsultancy.com](http://www.aemconsultancy.com)  
[www.imkanjo](http://www.imkanjo)

### Plus One Process



#### Plus One Components:

1. LVL floor with step sound insulation
2. LVL timber posts and beams
3. LVL roofs with water, thermal and fire insulation
4. Prefabricated LVL wall elements
5. Outdoor semi private areas.
6. Solar panels
7. Public Space for all residents of the building
8. Access to roof and unit entrances
9. Existing vertical circulation core



Background statistics resources:  
Berlin Strategy 2030 Report  
Zforn website

~ **113750** additional units can be provided expeditiously to cover 60% of Berlin's market need.

# OUR PROJECTS

Architecture

PREVIOUS PROJECTS OF THE COLLABORATION AND ITS MEMBERS

3

## Mozoon Towers, Qatar

Client: JV of Qatar General Insurance and Reinsurance Company (QGIRCO) and Al Sari Trading Company (AST)

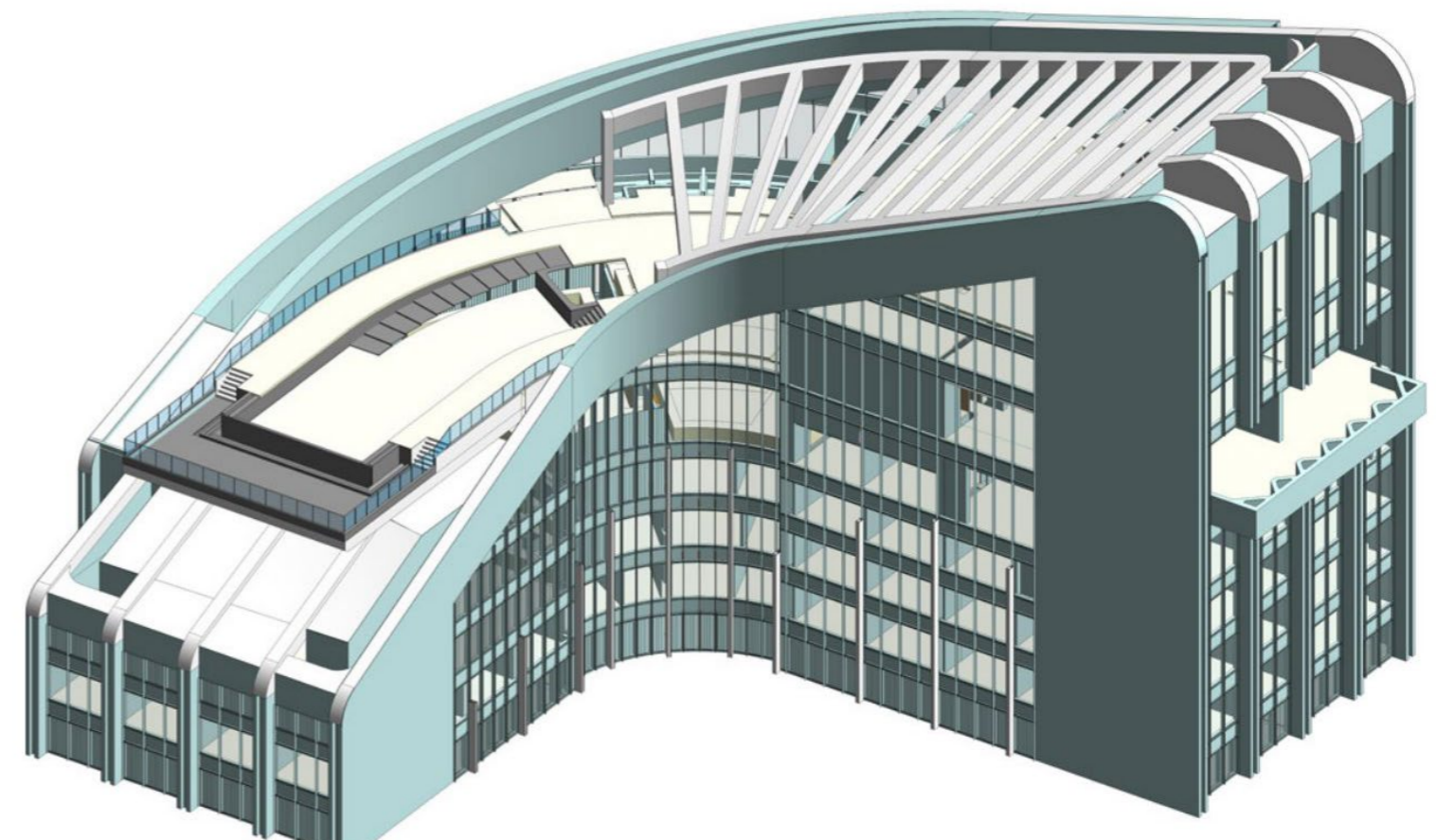
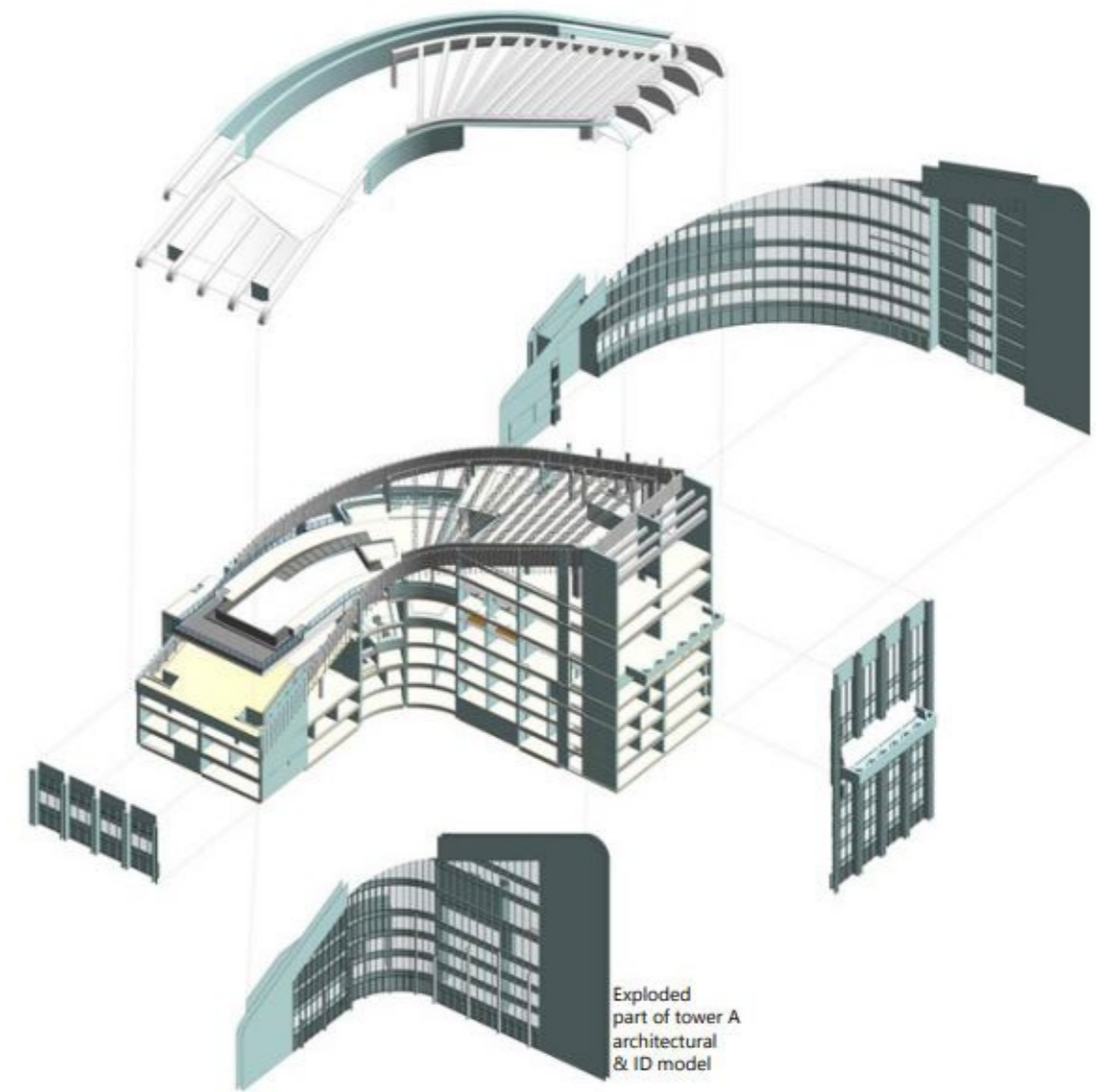
The joint venture between Qatar General Insurance and Reinsurance Company (QGIRCO) and Al Sari Trading Company (AST) is undertaking the construction of a mixed-use development known as Mozoon Towers. Currently, Bauer Spezialtiefbau from Germany is responsible for the enabling and foundation works of the \$687 million project. The development will comprise four towers, covering a total built-up area of 560,000 square meters.

4

## Pro Derma Beauty Clinic, Saudi Arabia

Client: Private

The team developed the interior of a beauty clinic located on the first and second floors of a skyscraper in Riyadh, Saudi Arabia. The space is strategically situated near Almamlaka tower, in one of the most important areas known for its prestigious and strategic spots. With great potential to attract a large number of people, the clinic features three main areas, including two waiting rooms, a reception area, and over 15 treatment rooms. Additionally, exterior wall elevations were meticulously designed to enhance the overall aesthetic appeal. The clinic specializes in various treatments, such as Laser, Botox, and liposuction.



About us • Our services • Core team • Our consultants • **Previous projects** • Our Clients • Contact us •

[www.aemconsultancy.com](http://www.aemconsultancy.com)  
[www.imkanjo](http://www.imkanjo)

# OUR PROJECTS

Architecture

PREVIOUS PROJECTS OF THE COLLABORATION AND ITS MEMBERS

## 5 KINDERGARTEN, HUNGARY

Client: Private

The main concept of the design is to create simple linear masses with interactive side wall paintings. The team role was to create Spatial design, modeling, rendering and post production.

## 6 Residence Complex, Jordan

Client: Private

The residence in Jordan is a five-story modern-style design with a focus on elegant and timeless aesthetics. Attention to detail and quality craftsmanship are prioritized throughout the design process to ensure a luxurious and enduring living experience.

About us • Our services • Core team • Our consultants • **Previous projects** • Our Clients • Contact us •

[www.aemconsultancy.com](http://www.aemconsultancy.com)  
[www.imkanjo](http://www.imkanjo)





# OUR PROJECTS

Structural & MEP Designs

PREVIOUS PROJECTS OF THE COLLABORATION AND ITS MEMBERS

## 1 Nestle Jordan New offices, Amman, Jordan

Client: Nestle Jordan trading Co. Ltd

The general scope of this project is to design and build the new office. The works include full finishing, interior fit-out, MEP (mechanical, electrical, and plumbing), and furnishing works.

## 2 RSB Residence

Client: Private

Construction of a private villa resort over a cliff, combining a total built-up area of 900 m2. The project scope includes full turnkey works, including but not limited to earthworks, skeleton works, finishing, and MEP. This is one of the rare energy passive residences in the region.

## 3 Residence Complex, Jordan

Client: Private

The scope of work for this project included the design of the structural and MEP (mechanical, electrical, and plumbing) systems. The residence, located in Jordan, features a five-story modern-style design that embodies elegance and timeless aesthetics.

About us • Our services • Core team • Our consultants • **Previous projects** • Our Clients • Contact us •

[www.aemconsultancy.com](http://www.aemconsultancy.com)  
[www.imkanjo](http://www.imkanjo)



# OUR PROJECTS

## Interior Design

PREVIOUS PROJECTS OF THE COLLABORATION AND ITS MEMBERS

1

### Rooben Leather Retail, Jordan

Client: Private

Our team is responsible for developing interior design concepts for a local retail leather store. We utilize software like Revit and Lumion to create accurate 3D models and renderings. In addition to the interior design, we also handle the visual identity of the store, including product boxes, business cards, and labels. The project covers an area of 70 square meters and includes a showroom for belts, a dedicated space for showcasing handmade products, as well as an office and storage area. The store is located in a special location in the old downtown of Amman, and our design focuses on creating a familiar and clear layout. We pay special attention to ensuring that the products are highly visible and their value is effectively showcased.

2

### Pro Derma Beauty Clinic, Saudi Arabia

Client: Private

The team developed the interior of a beauty clinic located on the first and second floors of a skyscraper in Riyadh, Saudi Arabia. The space is strategically situated near Almamlaka tower, in one of the most important areas known for its prestigious and strategic spots. With great potential to attract a large number of people, the clinic features three main areas, including two waiting rooms, a reception area, and over 15 treatment rooms. Additionally, exterior wall elevations were meticulously designed to enhance the overall aesthetic appeal. The clinic specializes in various treatments, such as Laser, Botox, and liposuction.

About us • Our services • Core team • Our consultants • **Previous projects** • Our Clients • Contact us •

[www.aemconsultancy.com](http://www.aemconsultancy.com)  
[www.imkanjo](http://www.imkanjo)



# OUR PROJECTS

Interior Design

PREVIOUS PROJECTS OF THE COLLABORATION AND ITS MEMBERS

## 3 Interior Design for Classical and Modern Villas, UAE Client: Private

The projects encompass the design and construction of classical and modern villas in the UAE. Our team will work closely with clients to create exquisite residences that showcase a seamless fusion of classical architectural elements and contemporary design principles.

## 4 Interior Design for Modern Villas, Romania Client: Private

The project focuses on the interior design of a modern residence in Romania. Our team will work closely with clients to create exceptional living spaces that combine modern elements with contemporary design concepts.

About us • Our services • Core team • Our consultants • **Previous projects** • Our Clients • Contact us •

[www.aemconsultancy.com](http://www.aemconsultancy.com)  
[www.imkanjo](http://www.imkanjo)



# OUR PROJECTS

Construction

PREVIOUS PROJECTS OF THE COLLABORATION AND ITS MEMBERS

1

**The execution of conservation and restoration works of group of buildings at the Citadel of Erbil, Iraq**

Client: HCECR & UNESCO

The project scope of works includes retrieving the courtyard shapes, rehabilitation of the facades, wooden columns and beams, restoration of concrete blocks and walls, and removal where needed. It also involves vertical and horizontal strengthening of the brickwork, rebuilding of walls or parapets, rebuilding of staircases, and other special elements required. The goal of this project is to regain the space itself, which in these house's typology could be defined as a body that has been hollowed out by courtyards that evolved into the zoning spaces.

2

**Construcon of New Ruweished Hospital, Mafraq, Jordan**

Client: HIMAM For Projects Development /Ministry of Health

The hospital is a shining example of providing quality care to the entire population of the Eastern region. It has 50 beds, with plenty of space for future growth. The hospital features three floors above the ground, making up a total built-up area of 7420 square meters. Our work included all Civil, MEP, Medical works, landscaping, and External works.

About us • Our services • Core team • Our consultants • **Previous projects** • Our Clients • Contact us •

[www.aemconsultancy.com](http://www.aemconsultancy.com)  
[www.imkanjo](http://www.imkanjo)



# OUR PROJECTS

Construction

PREVIOUS PROJECTS OF THE COLLABORATION AND ITS MEMBERS

3

## Construcon of Al Karamah Crossing Border, Jordan-Iraqi borders

Client: Government of Jordan

This project features the construction of the new borders at the Jordan side within the existing location. The work includes the arrival-departure building, luggage inspection building, cargo building, other government support buildings, passenger toilets block, mosque, passengers & cargo canopies, development of pavement, landscaping, and road works. The total built-up area is 7100 square meters. The scope of work includes civil, MEP, and infrastructure works.

4

## Construcon of the Emergency Department at Ruweished Hospital Building, Mafraq, Jordan

Client: Ministry of Health funded by UNOPS

The project involves the construction of an expansion for the Emergency Departments at Ruweished Hospital Building. The scope of work includes all civil, MEP, medical works, and external works.

About us • Our services • Core team • Our consultants • **Previous projects** • Our Clients • Contact us •

[www.aemconsultancy.com](http://www.aemconsultancy.com)  
[www.imkanjo](http://www.imkanjo)



# OUR PROJECTS

Construction

PREVIOUS PROJECTS OF THE COLLABORATION AND ITS MEMBERS

## 5 RSB Residence

Client: Private

Construction of a private villa resort over a cliff, combining a total built-up area of 900 m2. The project scope includes full turnkey works, including but not limited to earthworks, skeleton works, finishing, and MEP. This is one of the rare energy passive residences in the region.

## 6 Construction works of factory upgrade phase three secondary production hall

Client: Philip Morris Investments B.V. Jordan

PMI Jordan aims to enhance the current production capacity of the factory through a factory upgrade project. The scope of work focuses on the third most critical phase, which involves the reconstruction/renovation of block three, the production hall. This phase not only aims to increase production capacity but also to upgrade block three in terms of civil, architectural, and electromechanical works. The goal is to align the production halls with PMI standards and ensure standardization across the facility.

About us • Our services • Core team • Our consultants • **Previous projects** • Our Clients • Contact us •

[www.aemconsultancy.com](http://www.aemconsultancy.com)  
[www.imkanjo](http://www.imkanjo)



# OUR PROJECTS

## Construction

PREVIOUS PROJECTS OF THE COLLABORATION AND ITS MEMBERS

### 7 Housing Bank for Trade & Finance Client: Dulail Branch, Al Madina Al Munawarah Branches

The construction of the new Dulail Branch includes various works such as civil and skeleton works, finishes, external facade, steel structure canopies, external works, HVAC, joinery, and furnishing.

The renovation of the existing Madina Munawara branch involved various works, including finishes, external facade, canopies, electrical systems, HVAC, joinery, and furnishing.

### 8 Zain Innovation Campus - ZINC / Hashemite Client: Zain Telecom

Zain Innovation Campus aims to activate and ignite the startup and entrepreneurship ecosystem in Jordan and the MENA region. The scope of work included full interior fit-outs and MEP works.

### 9 Six forward operating bases (FOB) buildings of twelve persons Capacity Client: International Organization of Migration /IOM

About us • Our services • Core team • Our consultants • **Previous projects** • Our Clients • Contact us •

[www.aemconsultancy.com](http://www.aemconsultancy.com)  
[www.imkanjo](http://www.imkanjo)



# OUR PROJECTS

Construction

PREVIOUS PROJECTS OF THE COLLABORATION AND ITS MEMBERS

## 10 Construction of Al-Omari Borders Lab

Client: United Nations Office for Project Services / UNOPS

The construction of the third customs border labs in Jordan is a project funded by the Canadian Agency through UNOPS. The scope of work included civil, architectural, mechanical, and electrical works.

## 11 Construction/ Renovation of Execution of judgments department at the new Palace of Justice

Client: USAID ROLP - TETRA TECH. DPK / MOJ

The renovation of the Execution Department in the main Palace of Justice in Amman was funded by USAID through the Rule of Law Program. The project encompassed structural and architectural modifications to the existing department. The scope of work included various aspects such as demolition, concrete work, masonry block work, metal work, wooden works, water and heat insulation, HVAC system ventilation and air conditioning installation and re-routing, plumbing system installation, and firefighting system installation. Additionally, lighting installations, electrical distribution system installation, low current systems installation, fire alarm system, and voice evacuation system installation were also part of the project.

[About us](#) • [Our services](#) • [Core team](#) • [Our consultants](#) • [Previous projects](#) • [Our Clients](#) • [Contact us](#)

[www.aemconsultancy.com](http://www.aemconsultancy.com)  
[www.imkanjo](http://www.imkanjo)





# OUR PROJECTS

Construction

PREVIOUS PROJECTS OF THE COLLABORATION AND ITS MEMBERS

## 12 Housing Bank for Trade and Finance, Salt Branch

Client: Housing Bank for Trade and Finance

The renovation of a 60-year-old building with the addition of a new floor involved extensive work, including full demolition and structural modifications to the existing structure. The scope of works encompassed skeleton works, MEP (mechanical, electrical, and plumbing) works, facade improvements, and high-end finishing works. The project aimed to create a three-story branch with a total built-up area of 800 square meters.

## 13 International Community School

Client: International Community School

The most challenging project undertaken by IMKAN for Multi Construction Enterprises to date was the expansion project in 2016. This project involved adding a new space of 2,194 square meters, with the aim of operating it in the first semester of the 2016/2017 academic year. The project was awarded in April of the same year. The scope of work included skeleton construction, finishing, and electro-mechanical installations for the extension of a primary school. Despite the challenges, the project was successfully completed on time and within budget.



About us • Our services • Core team • Our consultants • **Previous projects** • Our Clients • Contact us •

[www.aemconsultancy.com](http://www.aemconsultancy.com)  
[www.imkanjo](http://www.imkanjo)

# OUR PROJECTS

## Construction

PREVIOUS PROJECTS OF THE COLLABORATION AND ITS MEMBERS

### 14 Norwegian Refugee Council Schools Client: Ministry of Education

IMKAN successfully executed the following school projects between 2015 and 2017:

- Taibeh Primary School for Girls
- Khawla Bent Al Azwar Primary School
- Soum Comprehensive Secondary School for Boys
- Soum Primary School for Boys
- Doghara Secondary School for Boys

### 15 Housing Bank for Trade & Finance Client: Housing Bank for Trade & Finance

- Bani Kennanh Branch
- Hawooz Branch
- Renovation of Marka Branch
- Renovation of Al Azraq Branch
- Al Karamah Branch
- Renovation of Al Petra Branch
- Renovation of Al Salam Branch
- Housing Bank General Manager office

About us • Our services • Core team • Our consultants • **Previous projects** • Our Clients • Contact us •

[www.aemconsultancy.com](http://www.aemconsultancy.com)  
[www.imkanjo](http://www.imkanjo)



# OUR PROJECTS

Construction

PREVIOUS PROJECTS OF THE COLLABORATION AND ITS MEMBERS

## 16 AKM Motor Showroom (Peugeot — Citroen — Mazda) Client: AL Khayyat Group

The project posed significant challenges due to its tight schedule and the need for value engineering to achieve cost-effective design solutions. The renovation took place in the renowned OLE building near the seventh circle. The scope of work included renovating the entire building, including finishes, electrical and mechanical works, facade cladding, external landscaping, and minor furnishing. Despite the challenges, the project was successfully delivered within the specified time constraints.

## 17 ZAIN North Irbid Shop Client: Zain Telecom

The scope of work included finishing, MEP, Branding, and furnishing.

## 18 Private Villas Client: Dahiet Al Anwar for Hosuing

The project involved three attached villas, each spanning four stories and totaling 1950m2 in built-up area. The scope included earthworks, skeleton works, MEP first fix, rough landscaping, and boundary walls.

About us • Our services • Core team • Our consultants • **Previous projects** • Our Clients • Contact us •

[www.aemconsultancy.com](http://www.aemconsultancy.com)  
[www.imkanjo](http://www.imkanjo)



# OUR PROJECTS

Construction

PREVIOUS PROJECTS OF THE COLLABORATION AND ITS MEMBERS

## 19 Rayeh Bint Al Hussien Decondary School & Abdullah Bin Rawaha Primary School for Boys

Client: MOPWH -USAID

The project comprises two two-story school buildings located in Al Mafrag. The scope of work includes earthworks, skeleton works, finishing, MEP works, landscaping, and external works.

## 20 Ramtha School & Kindergarten

Client: MercyCorps — USAID

The project involved the construction of Dunibah Secondary School and Amneh Bint Wahab Primary School in the Al Ramtha district to address the increased demand for education due to the influx of refugees. The project was executed at a fast pace, and the scope of works included earthwork, civil construction, finishing, and MEP (mechanical, electrical, and plumbing) installations.

## 21 Private Villa

Client: Mrs. Nadi Hammoudah

The scope of work for the construction project included the skeleton construction of a four-story villa, pool house, and parking area for two cars, covering a total area of 800 square meters.

About us • Our services • Core team • Our consultants • **Previous projects** • Our Clients • Contact us •

[www.aemconsultancy.com](http://www.aemconsultancy.com)  
[www.imkanjo](http://www.imkanjo)



# OUR PROJECTS

## Construction

PREVIOUS PROJECTS OF THE COLLABORATION AND ITS MEMBERS

### 22 Turkish Schools

Client: Jordan Turkish Schools

The project entails the construction of one building. The scope of work encompasses earthworks, skeleton works, finishing, MEP works, as well as interior and external works. Our responsibility is to provide all the necessary labor and materials in accordance with the specified design requirements.

### 23 Media Material Unit

Client: Jordan Health Communication Partnership - USAID

The project involved a complete refurbishment of the archiving center in the Ministry of Health, including the implementation of a new color coding archiving system and high-end finishing mechanisms. The scope of work encompassed joinery work, MEP installations, and other finishing tasks.



About us • Our services • Core team • Our consultants • **Previous projects** • Our Clients • Contact us •

[www.aemconsultancy.com](http://www.aemconsultancy.com)  
[www.imkanjo](http://www.imkanjo)



# OUR PROJECTS

Construction

PREVIOUS PROJECTS OF THE COLLABORATION AND ITS MEMBERS

## 24 **Urn Kalthom Public Park** Client: International Youth Foundation

The scope of the project was to design and build the renovation of the Um Kalthoum public park in Shoonah Janobiah. This included the construction of pathways, fabrication and installation of playgrounds, installation of artificial turf, installation of shades, and landscaping of the basketball court area.

## 25 **Integration of persons with disabilities into Jordanian society Project (Phase I)** Client: Mercy Corps

The project focused on implementing essential structural modifications and adjustments to enhance accessibility for persons with disabilities (PWDs) in 25 Community Based Organizations (CBOs). These modifications were carried out in accordance with the Jordanian Buildings Code and USAID environmental compliance guidelines. The scope of work encompassed providing all necessary labor, materials, tools, supplies, equipment, services, facilities, supervision, and administration to ensure the successful completion of the project. The aim was to create inclusive and accessible spaces that adhere to the standards set by the client addendum.

About us • Our services • Core team • Our consultants • **Previous projects** • Our Clients • Contact us •

[www.aemconsultancy.com](http://www.aemconsultancy.com)  
[www.imkanjo](http://www.imkanjo)



# Our CLIENTS



About us • Our services • Core team • Our consultants • Previous projects • **Our Clients** • Contact us •

[www.aemconsultancy.com](http://www.aemconsultancy.com)  
[www.imkanjo](http://www.imkanjo)

The Collaboration of  
**AEM Consultancy & IMKAN Construction**

[www.aemconsultancy.com](http://www.aemconsultancy.com)

[www.imkan.jo](http://www.imkan.jo)

[info@aemconsultancy.com](mailto:info@aemconsultancy.com)

[info@imkan.jo](mailto:info@imkan.jo)

Office 304, building 150, Dabouq, Amman, Jordan

Office 7, Floor 19 Justice Tower, Erbil, Kurdistan

Sharjah, UAE

Jordan: 00962777100771

Iraq: 009647517563017

